

## July 21st Meeting at Robert Burns Cottage, Atlanta

The Burns Cottage, is a replica of poet Robert Burns' birthplace in Alloway, Scotland. The Burns Club of Atlanta began in 1896 and has held a celebration on the anniversary of Burns' birthday every year since 1898. The building was finished in 1911 and is a close replica of the Scottish cottage, and was divided into the traditional four areas: but, ben, barn, and byre. The "but" would have been the kitchen, dining room and parents' bedroom. Next is the "ben," which would have served as the liv-



ing room and childrens' bedroom. These two rooms are decorated with memorabilia from the life of Robert Burns. The assembly room, which replaces the "barn" and "byre," is used for club meetings. Changes to Burns Cottage include the rear addition of a small kitchen, porch and restrooms.

## Write a "Robert Burns" Poem for the July 21<sup>st</sup> Quarterly Meeting!

You are invited to write a poem in honor of our location and program about Robert Burns, to be read during one of the open mic sessions in the meeting. You don't have to rhyme, or write in Scottish dialect as Burns did, but use some of the themes that he commonly wrote about: death, love, humor, nature, woman, friendship, marriage, unhappiness, anguish. Or use one of his titles or famous lines as inspiration!

### Inside this issue:

<i>Morning Speakers</i>	2
<i>Afternoon Speaker</i>	2
<i>Directions</i>	3
<i>Lunch Options</i>	4
<i>Meeting Schedule</i>	5
<i>Future GPS Meetings</i>	5
<i>Contests, etc.</i>	6

### Contributors:

Sandy Hokanson

Robert Lynn

Paul Samuels

Ron Self

Elizabeth Garcia

### Layout:

Sandy Hokanson

## Morning Program: Robert Burns Presenters

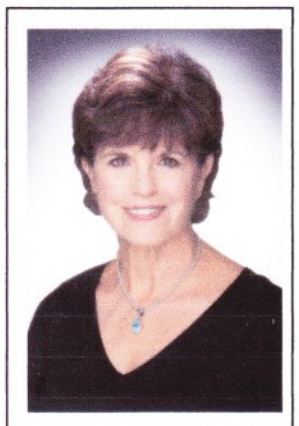
**Edward T. (Eddie) Morgan** was born in Millport, Isle of Cumbrae, Scotland. Like most Scots children of the era, Eddie studied Burns poetry and songs in both primary and secondary school, but it was through his father that Eddie first developed a true love of Burns poetry. The senior Morgan was an avid reader and reciter of the Bard, and was President of the Cumbrae Burns Club. After living and working in Sweden, Eddie and his family moved to Atlanta in 1986 when he joined the faculty at Emory University, where he is now Professor of Pharmacology; Director of the Graduate Program in Molecular and Systems Pharmacology; and a member of the Drug Discovery and Development Division of the Winship Cancer Institute. After he moved to Atlanta, he learned of the Burns Club of Atlanta and its historic Burns Cottage.

**George McClellan** is a retired Special Agent from the US Naval Investigative Service (NIS), now known as the NCIS as seen on TV. He has 40 years of experience in law enforcement, living and working around the world. He has been a Burns Club Member since 1998, a bagpiper for 35 years, a writer with his first book coming out this summer titled *Perilous Paths*, a historical biography that takes place between 1790 and 1816. He also collected and published the military histories of Gilmer County veterans. He's a member of the Scottish Society of Antiquities (FSA Scot), the St. Moritz Toboggan Club (Cresta Run), and The Confederates of Wisteria Lodge Chapter of the Sherlock Holmes Society. He also writes a monthly article on Robert Burns published in the Burns club of Atlanta newsletter. When completed, he expects to produce it as a yet another biography on Robert Burns.

**Walker Chandler** was born in Atlanta and grew up in the Buckhead/West Paces Ferry area of the city. He graduated from Georgia Military Academy in College Park, Georgia, attended the University of Virginia, graduating with a B.A. in Foreign Affairs from UVA ('70), obtained a Juris Doctor degree at Mercer and began his career in Zebulon, a small town 50 miles due South of Atlanta. He represented the Libertarian Party and other minor political parties on a score of cases in federal court. The most notable case was one he took up to the Eleventh Circuit and then to the Supreme Court. As a candidate of the Libertarian Party, he ran for Lt. Governor of Georgia in 1990 and '94 and Attorney General in '98. A couple of his other pursuits and interests through the years have included bag piping, and writing. In 1997 he published the novel *The Evangeline Manuscript*. There is now a professionally written screenplay of it (available but not being actively promoted) in LA and a translation in Spanish is being prepared in Buenos Aires. He has also published a book of poetry, *The Gift*, in 2007.

## Afternoon Program

**Anne Webster** *A History of Nursing*, Anne Webster's poetry collection, was a nominee for the 2009 National Book Award. Prior to its publication, she spent twenty-five years working in hospital critical care areas, emergency departments, and nursing administration. Her poetry has appeared in many literary journals and anthologies, including *The Southern Poetry Review*, *The New York Quarterly*, *Intensive Care: More Poetry and Prose by Nurses* and *The Poetry of Nursing: Poems and Commentaries of Leading Nurse Poets*. Most recently, Anne's essays and poems have been finalists in the Faulkner Words & Music Competition. She is currently completing a second book of poems, as well as a memoir. Anne lives in Atlanta with her husband Larry. Her poetry is recommended to us by Terry Hensel, who has heard her read. Her website is [www.ahistoryofnursing.com](http://www.ahistoryofnursing.com).



**The Robert Burns Cottage address:**  
**988 Alloway Pl., Atlanta, GA 30316**

**Parking:** There is NO parking on Alloway Place, the street in front of the cottage but you may park on the side road called Ayr Place. Parking is available in a small gravel parking lot on the cottage property, as well as a grass field just beyond it that extends to the corner in front of the caretaker's cottage. Also, there is a field behind the stone wall at the back of the gravel parking lot, that you enter through the opening between the stone wall and the cottage. Parking attendants will assist you to find a parking space as needed. If you need handicap parking, pull into the circle drive directly in front of the cottage.

## **Directions to Burns Cottage**

**From Atlanta Area:** Get to I-20 going east from the center of Atlanta or onto I-20 going west from I-285 on the east side of Atlanta. From Interstate 20 (going either direction) take exit 60 for US-23/Morland Ave, going south. Go about 1.4 miles south on Moreland to E. Confederate Ave SE and turn right. Travel on E. Confederate for 0.4 miles and turn right onto Alloway Place SE. The Burns Cottage will be about 300 feet on the right.

**From Columbus:** Get to I-85 and go North. Follow I-85 to exit 247 to merge onto I-20 E toward Augusta. Travel on I-85 to take exit 60A for US-23/Morland Ave, going south. Go about 1.4 miles south on Moreland to E. Confederate Ave SE and turn right. Travel on E. Confederate for 0.4 miles and turn right onto Alloway Place SE. The Burns Cottage will be about 300 feet on the right.

**From Macon:** Travel I-75 N toward Atlanta. Take exit 227 to merge onto I-675 N toward I-285. Take the I-285 W exit on the left toward Atlanta/Atlanta Airport. Keep to the right at the fork (do not get onto I-285) and follow the signs for US-23/Morland Ave and turn right onto US-23/Morland Ave. Travel ~3.9 miles and turn left onto E Confederate Ave SE. Travel on E. Confederate for 0.4 miles and turn right onto Alloway Place SE. The Burns Cottage will be about 300 feet on the right.

**From Athens:** Travel west on US-78. Follow US-78 W to the Monroe area and exit onto GA-138 W/Martin Luther King Jr Blvd towards Conyers. Exit to the right onto I-20 W toward Atlanta. take exit 60 for US-23/Morland Ave, turn left to go south. Continue about 1.4 miles south on Moreland to E. Confederate Ave SE and turn right. Travel on E. Confederate for 0.4 miles and turn right onto Alloway Place SE. The Burns Cottage will be about 300 feet on the right.

## Lunch Options for the Quarterly Meeting at the Robert Burns Cottage

Please make your selection, make the check out to **GPS** and mail it---no later than July 1st to:

**Dale Hokanson, GPS Treasurer**  
**640 Sweet Gum Forest Lane**  
**Alpharetta, GA 30005**

All sandwiches have lettuce and tomato on them unless otherwise specified.

Box lunch comes with: side salad, pickle spear, light dessert of homemade sweet and fruit garnish

**Please mark your choice(s)**

- #1 ☐ Roast beef with cheddar on egg brioche or wheat bread.
- #2 ☐ Baked ham with Jarlsberg on Jewish rye bread.
- #3 ☐ Turkey breast on sour dough white bread with cranberry sauce and mayo.
- #4 ☐ Mother's chicken salad on fresh baked croissant.
- #5 ☐ Baked ham salad on whole wheat bread.
- #6 ☐ California chicken club on a large croissant (sliced grilled chicken, bacon, lettuce, tomato, avocado and alfalfa sprouts).
- #7 ☐ Homemade egg salad on sesame roll.
- #8 ☐ Vegetarian delight with boursin, lettuce, tomato, avocado and sprouts in pita pocket.
- #9 ☐ Corned Beef and havarti on onion roll.
- #10 ☐ Grilled chicken with lemon garlic mayo on brioche roll.
- #11 ☐ Insalata Caprese (sliced tomato, arugula, pest and fresh mozzarella) on a ciabatta roll.

**Total number of lunches x \$13.00 = \$**

## July 21<sup>st</sup> Quarterly Meeting Schedule

8:30-9:00	Coffee and mingling
9:00-9:15	Presidents Welcome and announcements
9:15-9:30	Nominating Committee Report
9:30-10:30	Robert Burns Program: Eddie Morgan, George McClellan, and Walker Chandler
10:30-10:45	Break
10:45-11:15	Robert Burns Poems by members/Open Mic
11:15-11:45	<i>Reach Of Song 2012</i> Unveiling and Awards For Excellence Winners poems
11:45-1:00	Lunch
1:11-1:15	Raffle
1:15-1:45	Open Mic/ Other Member Poems – ROS 2012
1:45-2:00	Break
2:00-2:45	Featured Speaker – Anne Webster
2:45-3:00	Closing Comments
3:00	Board Meeting

## Recap of April 21, 2012 Quarterly Meeting in Dahlonega

### LYNN FARMER READ FROM WINNING CHAPBOOK

Johns Creek member Lynn Farmer read from her winning chapbook, *The Rare, Persistent Light*, before the Georgia Poetry Society on April 21 in Dahlonega. The volume won the 2011 Charles Dickson Chapbook Contest of GPS, funded in part by a grant from the estate of John K. and Mary H. Ottley and a gift from Virginia Dickson.

**BOB WOOD READ FROM GORIZIA NOTEBOOK** and captured the sense of awe any American feels in Italy: All that history! All that Art! Insightful poems that help us recognize the “transparency of borders.” He was a tour guide par excellence! Bob is a professor at Georgia Tech.

**National Federation of State Poetry Societies Convention** is meeting June 14-18 in Merrillville, Indiana. For information, check out their website: [www.nfpps.com](http://www.nfpps.com) Larry Hand is going as our official delegate. Let President, Sandy Hokanson know if you are also going. We can have up to 5 delegates, but you need an official endorsement letter.

**BONNIE J. ROBINSON WORKSHOP ON SELF-PUBLISHING** walked us through the world of three eBook publishing choices: Kindle Direct Publishing, Nook – Pub! for Barnes & Noble, and Smashwords ([www.Smashwords.com](http://www.Smashwords.com)) and gave us suggestions for getting the most media exposure for our poetry.

**Johns Creek Poetry Group** meets at the Northeast/Spruill Oaks Library on Old Alabama Rd., Johns Creek, GA, 10:15-noon. See Johns Creek Poetry group page at [www.roberttlynn.com](http://www.roberttlynn.com)

**August 25:** Jill Jennings, new book, *Dead Man's Flower*

**September 22:** Steven Shields, new book, *Valentines for Many People*

**November 17:** Johns Creek Poetry Festival

## Future GPS Meetings

**October 2012 – To Be Announced.**

**January 19, 2013 – Kennesaw State University – Beth Glys featured speaker.**

**April 21, 2013** will be a joint meeting of the Alabama State Poetry Society and the Georgia Poetry Society, held at West Georgia State University in Carrollton with Pulitzer Prize-winning Poet **Natasha Trethewey** as featured poet.

**DEADLINE** for Pre-Orders of *Reach Of Song 2012* is **JUNE 15<sup>th</sup>** Editor Elizabeth Garcia says you can download the order form from [www.georgiapoetrysociety.org](http://www.georgiapoetrysociety.org) and mail them to her at the address on the form. Extra copies will be available at the July 21<sup>st</sup> meeting at the Burns Cottage.

## Other Member News!

**Mila Juliana Garcia Arrives** - Member Elizabeth Garcia gave birth to daughter Mila Juliana on April 19, 6 pounds, 8 ounces, 19 inches long. Liz worked the birth in around editing duties of *The Reach of Song* for 2012. The volume will be unveiled at the July 21 meeting of the Georgia Poetry Society at the Burns Cottage in Atlanta.

**Nominating Committee** Robert Lynn, Chairman, and Ron Self and Francie Rountree have been appointed by the Board to provide a slate of officers and at-large directors to be "presented to the general membership at the July meeting, at which time, additional nominations may be made from the floor. A formal ballot, permitting write-in votes for other candidates, shall be presented by mail to all active members by September 1. Write-in votes must indicate a formal second, and willingness by the candidate to serve. A majority vote for each office on ballots returned by September 15<sup>th</sup> shall constitute election." By-Laws, Article VIII, Section 2B.

If you might have an interest in serving as an officer or committee member of GPS, please indicate the area of your interest to Bob Lynn at [robertlynn@comcast.net](mailto:robertlynn@comcast.net). Areas of special need are: Assistant Treasurer, Contests Vice Chair, Assistant Editor, *The Reach Of Song*.

**Temporary Treasurer** Dale Hokanson has been appointed acting Treasurer by the Board until the Nominating Committee finds a permanent replacement. Any expenses should be sent to him at: 640 Sweet Gum Forest Lane, Alpharetta, GA 30005.

**Membership Report** Membership Chairman, Robert Lynn reports that we have 200 members now, thanks to his valiant efforts of pursuing past members and encouraging new members to join! **YOU** can help strengthen the GPS by inviting friends to join us. Download a membership application or a renewal form from our website: [www.georgiapoetrysociety.org](http://www.georgiapoetrysociety.org)

**Poetry In The Schools Report** Paul Samuels reports that over 2000 students have heard 10 GPS member poets read and discuss poetry this spring, in 15 different schools. He says that 33 members have signed up to participate and he hopes to connect even more poets and schools in the coming school year. **Every member can help** by getting contact information of teachers or media specialists in a school near you and passing them on to Paul. The youth of our state are the future poets and members of GPS. **Let's make this great program a priority! Invite your younger poet friends to join us.** Contact Paul Samuels at [paulsamuels1@gmail.com](mailto:paulsamuels1@gmail.com)

## Poetry Contests, Conferences and Classes

### Karen Paul Holmes to teach at John C. Campbell Folk School

Itching for inspiration? I'm teaching an all-genre writing class in the mountains about 2 hours north of Atlanta the weekend of July 6. It's an arts and crafts camp for adults called John C. Campbell Folk School, an incredibly cool and fun place. Bring a friend or significant other -- there are a multitude of class subjects to choose from -- blacksmithing, bead making, book binding, etc.

Here's the link to register for my class

[https://www.folkschool.org/index.php?section=class\\_detail&class\\_id=5697](https://www.folkschool.org/index.php?section=class_detail&class_id=5697)

Here's the class description: "Calling All Muses. Let's stir the creative juices with help from other muses. Stream-of-consciousness writing to classical music will get us going. Exploring artists like Monet, the Beatles, or Baryshnikov will spur ideas for characters, plots, or poems. Expect to get a burst of inspiration to finish a writing project—or start a new one. You'll also receive editing tips to make your pieces stronger and more readable. All levels welcome."

And if you're wondering about my teaching qualifications, here's some info:

"Karen Paul Holmes, an award-winning writer, has work published in business magazines, literary journals, and anthologies. Her enthusiasm for teaching has given her top ratings for her writing workshops at international conferences. She also taught poetry to students through the Georgia Poetry Society's "Poets in the Schools" program. Karen is a writing coach, poet, freelance writer, and the editor of the North Carolina Writers' Network's *Netwest News*. She hosts a monthly "Writer's Night Out" in Hiawassee, GA."

### ***Southern Poetry Review* "Georgia Poets" Issue Deadline July 31**

Poems do not need to address Georgia or the South directly; it is fine if they do so, of course, but we are interested mainly in accomplished poets with direct, strong connections to the state. Please state your connection to Georgia.

Email work as Word or RTF attachments. Put "Georgia Poets" in the subject line. Deadline: July 31. Unpublished work only. [James.Smith@armstrong.edu](mailto:James.Smith@armstrong.edu)

For regular mail, send to: "Georgia Poets Issue," Southern Poetry Review, Dept. of LLP, Armstrong Atlantic State University, 11935 Abercorn St., Savannah, GA 31419-1997

### **Porter Fleming Literary Competition Submission Deadline: July 13th**

AUGUSTA, GA (APRIL 2012)—The 2012 Porter Fleming Literary Competition, now in its nineteenth year, recognizes outstanding fiction, nonfiction, poetry, and plays. Writers age 18 and older who reside in Georgia, Florida, Alabama, South Carolina, and North Carolina are invited to enter. The deadline for submissions is July 13, 2012. The competition awards cash prizes totaling \$7,000. Entry forms and guidelines can be found on [www.themorris.org/porterfleming.html](http://www.themorris.org/porterfleming.html). The competition is administered, with the support of the Porter Fleming Foundation, by the Morris Museum of Art,

"The Trustees of the Academy of Richmond County are honored to have sponsored the literary competition since its founding by Augusta author and artist Berry Fleming," said **Cobbs Nixon, a trustee of the Academy of Richmond County**. "Our hope is that this competition will foster more great writers within our city, state, and region."

"We are, of course, very pleased to be associated in this important endeavor with our friends at the Porter Fleming Foundation," said **Kevin Grogan, director of the Morris Museum of Art**. "It serves as an extension of our broad interest in Southern cultural studies and is a perfect compliment to the museum's work in the visual arts."

The writing competition is held in memory of Porter Fleming, a prominent citizen of Augusta, Georgia. In 1963, Porter Fleming's son, Berry Fleming, who had himself achieved renown as a writer, artist, and philanthropist, established a charitable foundation in honor of his father. To this day, The Porter Fleming Foundation contributes to the educational, literary, artistic, scientific, historical, musical, and cultural enrichment of the lives of the residents of the City of Augusta and the geographical area immediately adjacent to it in Georgia and South Carolina.

ceremony which will be held on Saturday, October 6, 2012 from 5:00 to 7:00 p.m. in the Morris Museum of Art auditorium. The event takes place during the Westobou Festival, an annual celebration of the Arts in Augusta, Georgia October 3–7, 2012. [www.themorris.org/porterfleming.html](http://www.themorris.org/porterfleming.html).

**The 6<sup>th</sup> Annual Chattahoochee Valley Writers Conference** is scheduled for the last weekend in September, September 27-29 at the Columbus Public Library, and a special invitation is being extended to GPS members. On Thursday evening, September 27<sup>th</sup>, the conference kicks off with a Carson McCullers Film Festival highlighting two of the Columbus native's novels that were made into movies, **The Member of the Wedding** and **The Ballad of a Sad Café**. On Friday evening, September 28<sup>th</sup>, the conference poetry faculty, Ayodele Heath and Irene Latham, will present a joint reading. The special invitation for GPS members is to join the poets for a casual supper at the home of Ron Self before their reading. Then on Saturday, September 29<sup>th</sup>, the all-day conference will include poetry workshops with Irene and Ayodele as well as a whole host of other workshops including a keynote address and presentation by best-selling author Terry Kay. The conference offers cash prizes in poetry and short story contests. And, if you've got a novel or short story ready for publication, the conference even provides a chance to sign up to have your work critiqued by an editor. For more details, check out the conference website, [chattwriters.org](http://chattwriters.org). If you want to accept the invitation to the casual supper on Friday, let Ron know by email at [smrws@aol.com](mailto:smrws@aol.com).

**The Frost Place 2012 Poetry Programs** (Maudelle Driskell is one of the judges used for our annual Fall contests. She is connected to Frost Place.) **Conference on Poetry and Teaching** [<http://www.frostplace.org/html/conference-teaching.html>](http://www.frostplace.org/html/conference-teaching.html) June 24 - 28 \$675, plus \$100 for food Scholarships and discounts available **Application** [<http://www.frostplace.org/html/CPT12IA.pdf>](http://www.frostplace.org/html/CPT12IA.pdf) **deadline May 30** Financial assistance deadline April 15. Held each year in June, the Conference is a unique opportunity for teachers to work closely with their peers and with a team of illustrious poets who have particular expertise and enthusiasm for sharing poetry with young people. Over the course of four and one-half days, faculty poets will present specific techniques for teaching poetry including sample exercises and prompts which teachers will be invited to try out and then discuss. Each day will offer sessions devoted to the participants sharing their own teaching ideas—a popular element in prior conferences. Certificate of completion includes thirty-three Continuing Education credits. Graduate level credits are available through Plymouth State University in New Hampshire.

**Request for Teen Poetry Class** Kay Clark, the Young Adult Librarian at the Northeast/Spruill Oaks Branch in Johns Creek is looking for poets to help start a beginning poetry program for teens. If you want to help with this request, contact her at: Northeast/Spruill Oaks Library, 9560 Spruill Road, Johns Creek, GA 30022, Telephone: 770-360-8820 - ext. 13, or at: [kay.clark@fultoncountyga.gov](mailto:kay.clark@fultoncountyga.gov).